

## Hotel information

### Recommended Hotels

GRAND HILAI TAIPEI
<p>Grand Hilai Taipei is conveniently located near the Nangang Exhibition Center, Nankang Software Park, and Oriental Science Park. It is just a 3-minute walk from the Nangang Exhibition Center Station. The hotel stands at a height of 26 floors with 4 underground levels and nearly 900 parking spaces.</p> <p>Inheriting the spirit of "Grand Hilai-style Hospitality and Heartwarming Services", the hotel holds dual certifications from the Les Clefs d'Or (Golden Keys) and the British Butler Guild (UKBG), aligning it with the experience of international five-star accommodations. The hotel offers 425 exquisite guest rooms, including elegant suites with panoramic views of Greater Taipei. Room sizes range from 43sqm to 528sqm.</p> <p>The well-appointed rooms feature a sleek and minimalist mid-century modern design with a grayscale color palette, complemented by expansive floor-to-ceiling glass, offering breathtaking views of Nangang District, Keelung River, Taipei skyline, as well as charming outdoor venues and an infinity pool.</p> <p>Address: No. 168, Jingmao 1st Rd., Nangang District, Taipei City</p> <p>Map: <a href="https://maps.app.goo.gl/DBGwX1jnE5gWN7qr5">https://maps.app.goo.gl/DBGwX1jnE5gWN7qr5</a></p> <p>Website: <a href="https://www.grand-hilai.com.tw/taipei/">https://www.grand-hilai.com.tw/taipei/</a></p>



THE PLACE TAIPEI
<p>The Place is a stylish designer hotel brand under the Hotel Royal Group. It emphasizes the hotel's deep connection with the imagery and culture of the hotel's location, and insists on the brand spirit of "Fun, Fusion, Fashion". It was officially established in Taipei in 2019.</p> <p>The interior design of the hotel was specially designed by the Dutch design team</p>

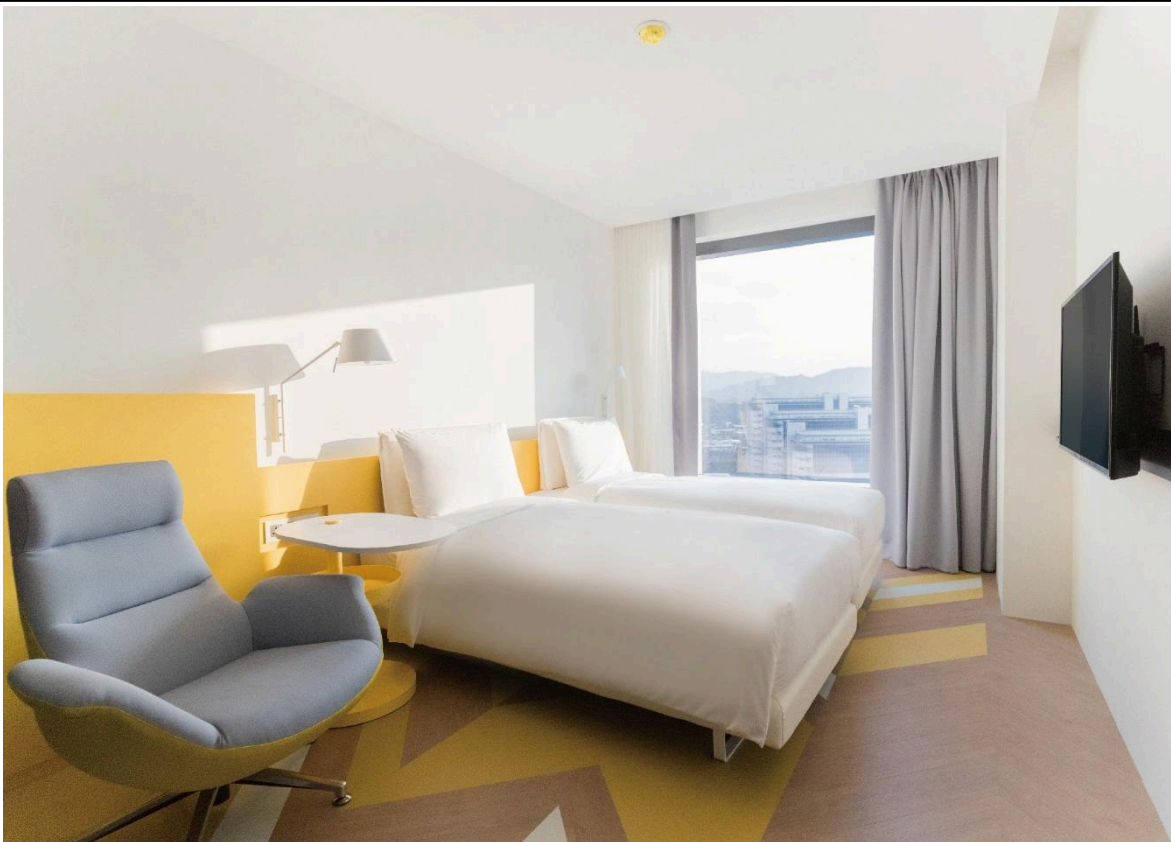
Mecanoo, which planned for 179 simple and chic rooms, public art and culture spaces, conference rooms and specialty restaurants. The hotel makes use of historical elements such as the harbor, red bricks and tea leaves to present the imagery of Nangang at different moments in time.

The hotel's exterior and lighting design were jointly designed by internationally renowned masters C.Y. Lee and Yuan Tsung-nan. The exterior features a streamlined silhouette that enriches the skyline's contours and adds character to the building, emphasizing its important location at a transportation hub; the new and unique moving lights that light up at night were the first in Taiwan to use new Wi-Fi-operated chips, creating a new landmark with unique characteristics in Nangang.

Address: No. 196, Jingmao 2nd Rd, Nangang District, Taipei City

Map: <https://maps.app.goo.gl/Eer5C9nwiKtXwfQz6>

Website: <https://www.hotelroyal.com.tw/en-us/nangang>



#### COURTYARD TAIPEI

Courtyard by Marriott owns more than 1000 hotels over the world. Courtyard by Marriot Taipei is granted the franchise hotel operation rights by Marriott International or its subsidiaries.

Courtyard Taipei lies between the 7th to 30th floor of the building where the Nangang MRT, Taiwan High Speed Rail, and Taiwan Railway and Transportation connects. It is only a 5-minute drive from Nangang Exhibition Hall, and is adjacent to Nangang Software Park, Neihu Science Park, Taipei Dome and major metropolitan areas have very convenient transportation advantages.

It is also close POPOP Taipei Factory and Taipei Music Center. The well-connected transportation network makes it easier to travel from south to north to famous spots in Taiwan, and easily connects to the world and Taiwan.

Address: No. 359, Section 7 Zhongxiao East Road, Nangang District, Taipei City

Map: <https://maps.app.goo.gl/7hwUhKcGubjfU2V9A>

Website: <https://www.courtyardtaipei.com.tw/en/>



#### GREEN WORLD NANGANG

Green World Nangang Hotel is inspired by the concept of a forest. Shades of green, wood elements, and gentle breezes are metaphorically interwoven throughout every corner.

Behind the building lies a lush natural landscape, while the glass curtain exterior resembles a mystical mist in the forest. The lobby feels like the entrance to a forest — serene and simple in texture — allowing guests to immerse themselves in a cozy and tranquil little forest retreat.

Address: No. 528, Section 7, Zhongxiao E Rd, Nangang District, Taipei City

Map: <https://nangang.greenworldhotels.com/en/green-world-nangang-2/>

Website: <https://www.courtyardtaipei.com.tw/en/>





#### TAIPEI FORWARD HOTEL NANGANG BRANCH

In synch with Forward Enterprise Group's mission of providing "sincere, practical, reliable, and high-quality service" to our customers, Forward Hotel Taipei is the group's newest hotel catered toward business travelers. To separate itself from the rest, the "swallow" is the main concept of Forward Hotel Taipei.

The English trademark is designed with modern lines and proportions. At the same time, it integrates the trajectory of flying in A and O, which implies the meaning of "A-level service, successful achievement". It is hoped that the top-level service of the business hotel can bring customers the best service. Come to success!

Address: No. 23, Sanchong Rd, Nangang District, Taipei City

Map: <https://maps.app.goo.gl/ob1kMrgBRgFPr1zm9>

Website: <https://fwhotelng.tw/en/>

