

OPEN  
Compute Project

**Flipkart**



# STERLITE PNI PODS

15<sup>th</sup> June 2019

Palash Bose – Head Product Management

[palash.bose@sterlite.com](mailto:palash.bose@sterlite.com)

Bangalore – June 15<sup>th</sup>, 2019

*Consume. Collaborate.  
Contribute.*

# Introducing Sterlite PODS



## SDN, NFV & AI PLATFORM



TELECOM INFRA PROJECT



pFTTx, pWDM, pRadio, SD-WAN

# STL's PNI PODS

Product & Solution Engineering towards Programmable Networking & Intelligence

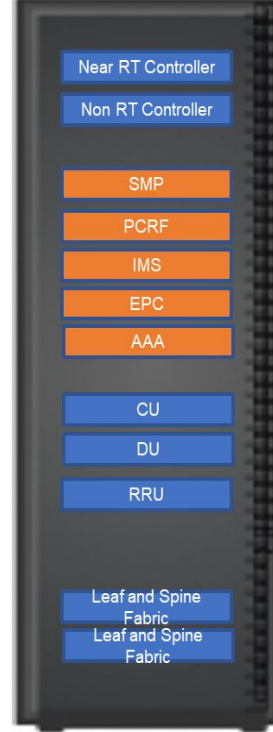
## pFTTX



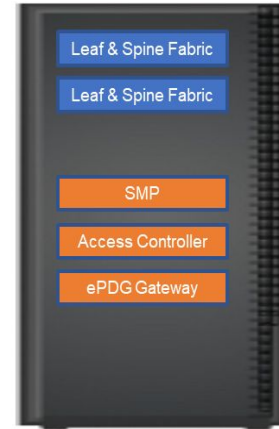
## pWDM



## pRadio +Wifi

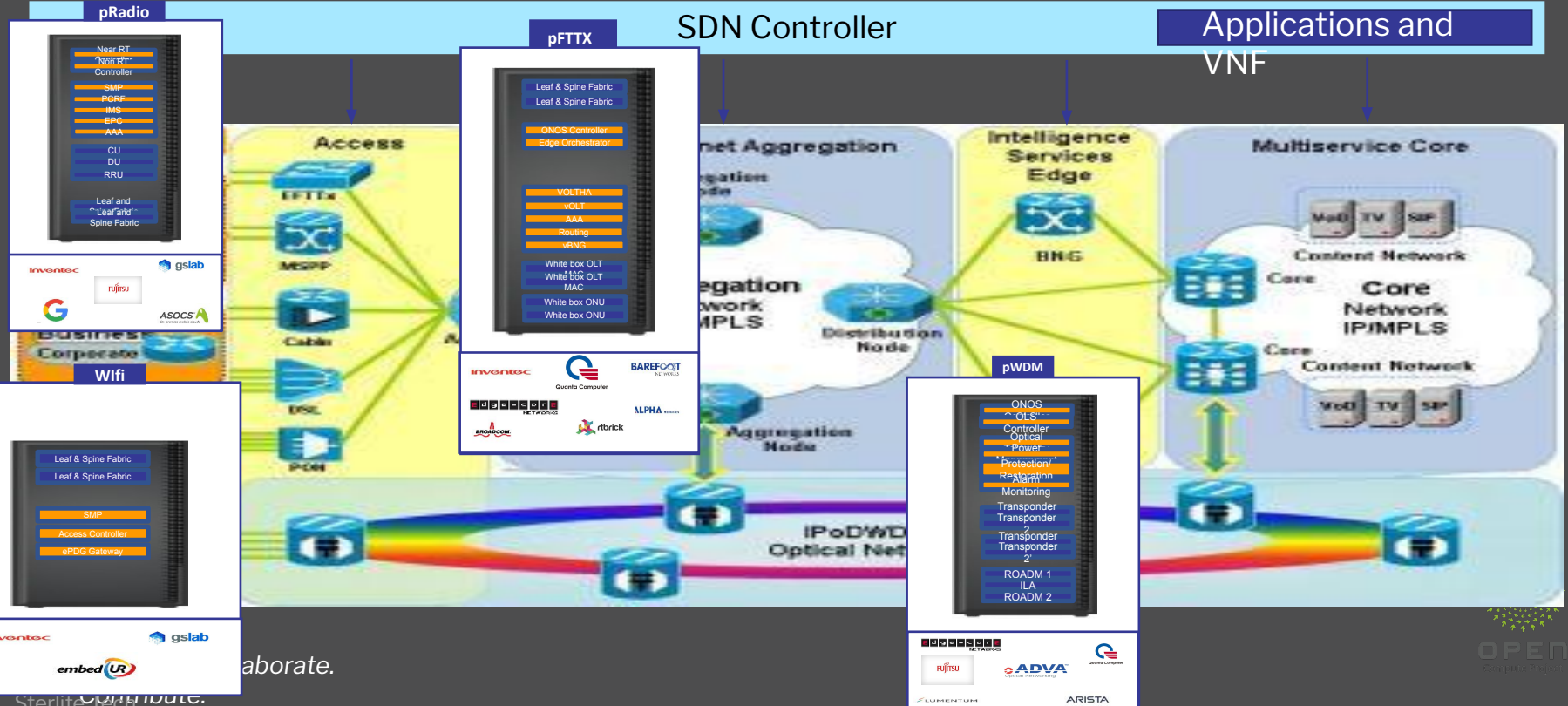


## Wifi



Consume. Collaborate.  
Contribute.

# PNI Relevance and Portfolio

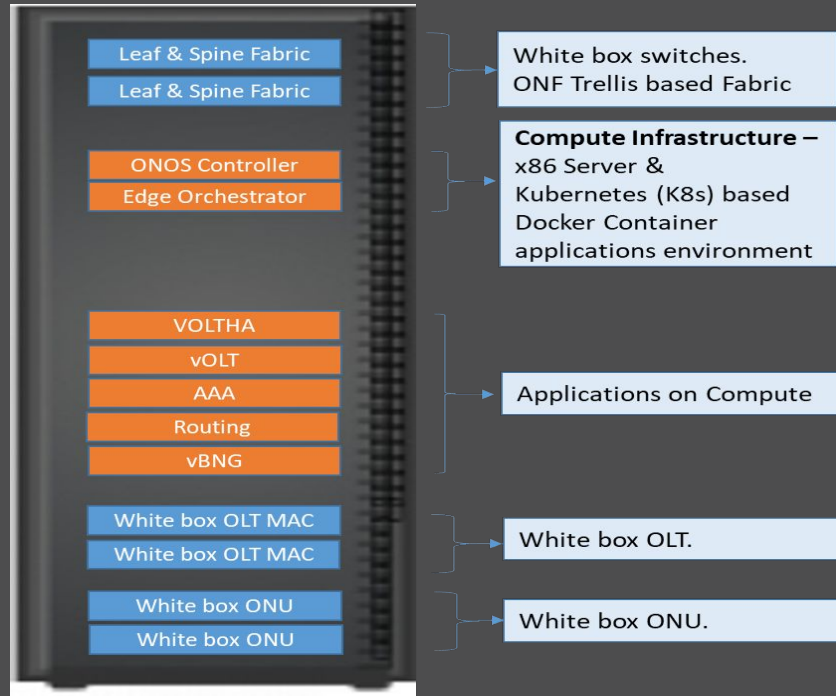


aborate.

Sterilite contribute.

OPEN  
Source Project

# Programmable FTTX



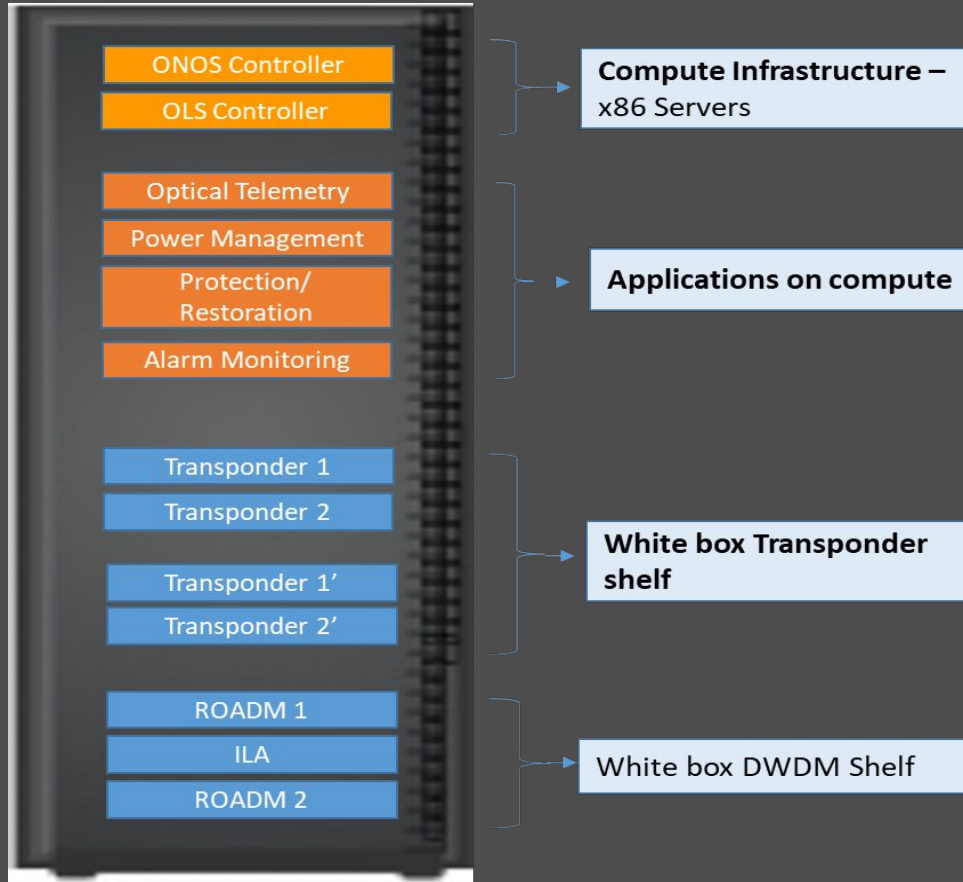
## OCP Compliant Specifications

1. Edge Chassis
2. Compute SLEDs

## Applications

**ONOS** – FTTX Controller  
**vOLTHA** – PON Hardware Abstraction Layer.  
**vOLT** – OLT Control Applications.  
**Edge Orchestrator** – Orchestration & Management  
**AAA** – Subscriber authentication through AAA, PPPoE/IPoE, DHCP applications.  
**vBNG** – BNG control application

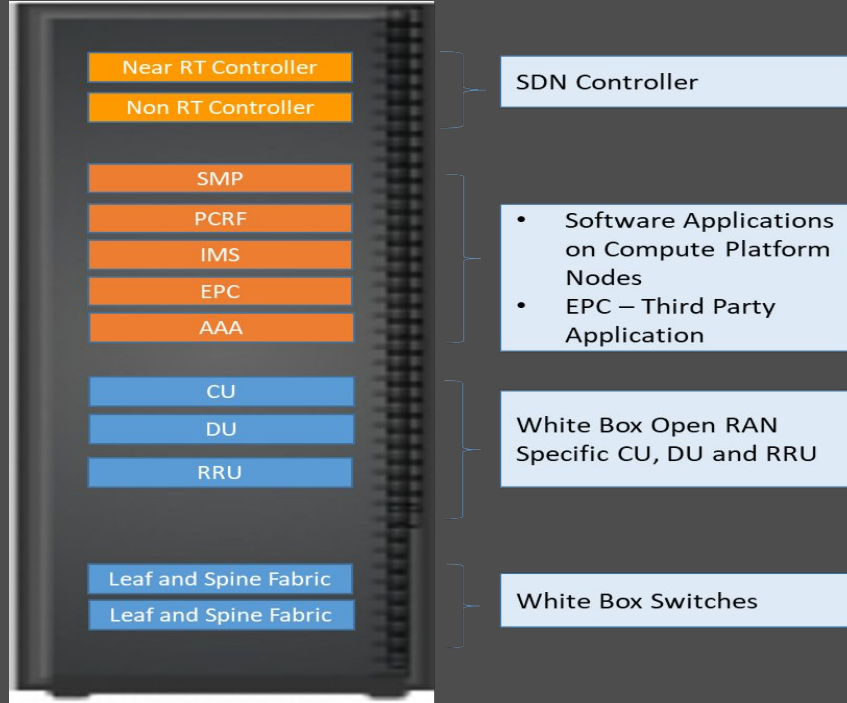
# Programmable WDM



## Application

**ONOS** – pWDM Overall Controller  
**OLS** – Open Line System Controller  
**Optical Telemetry** – Telemetry (system health check measurements) transferred from physical devices to controller  
**Power Management** – dB measurements  
**Protection/Restoration** – Algorithms for protection/restoration during fiber cuts/failures  
**Alarm Monitoring** – Alarms monitoring and correlation application

# Programmable Radio



## OCP Compliant Specifications

1. Edge Chassis
2. Compute SLEDs

## Applications

**RT Controller** – Real Time Controller  
**SMP Platform** – Service Management Platform with AAA, Analytics, Charging Gateway  
**PCRF** – Policy Charging Rules Function  
**IMS** – Integrated Management System  
**CU** – Control Unit of BBU (Baseband Unit)  
**DU** – Device Unit of BBU  
**RRU** – Radio Resource Unit

# Programmable Radio



White Box Switches

- Software Applications on Compute Platform Nodes
- ePDG – Third Party Application

## Applicatio

**SMP Platform** – Service Management Platform with AAA, Analytics, Charging Gateway  
**Access Controller** – Management of third party wireless access points  
**ePDG Gateway** – Evolved Packet Data Gateway provides security for untrusted applications over IPsec termination



# Summary

- ✓ Sterlite PNI
- ✓ PODS Relevance
- ✓ PODS Details