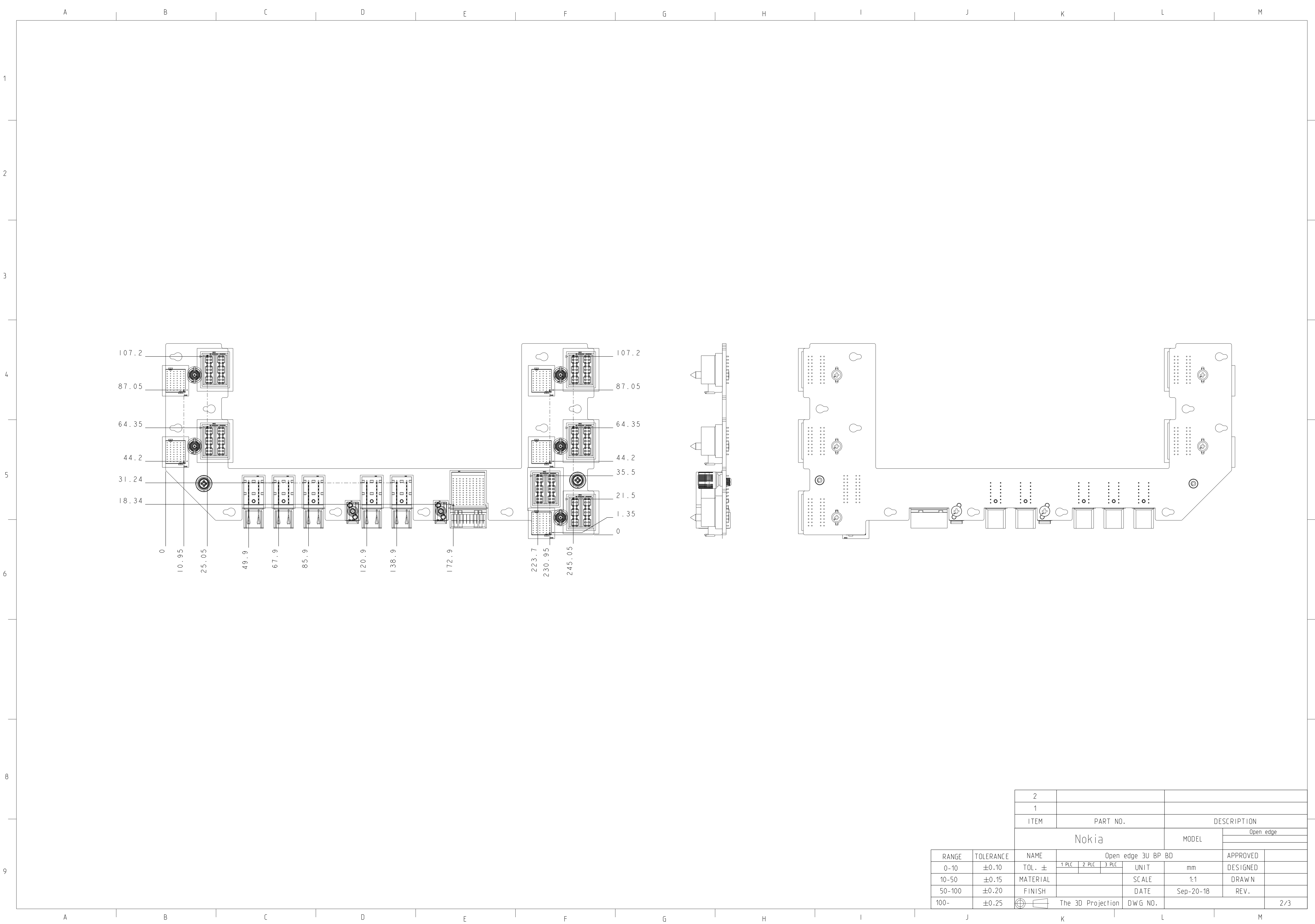
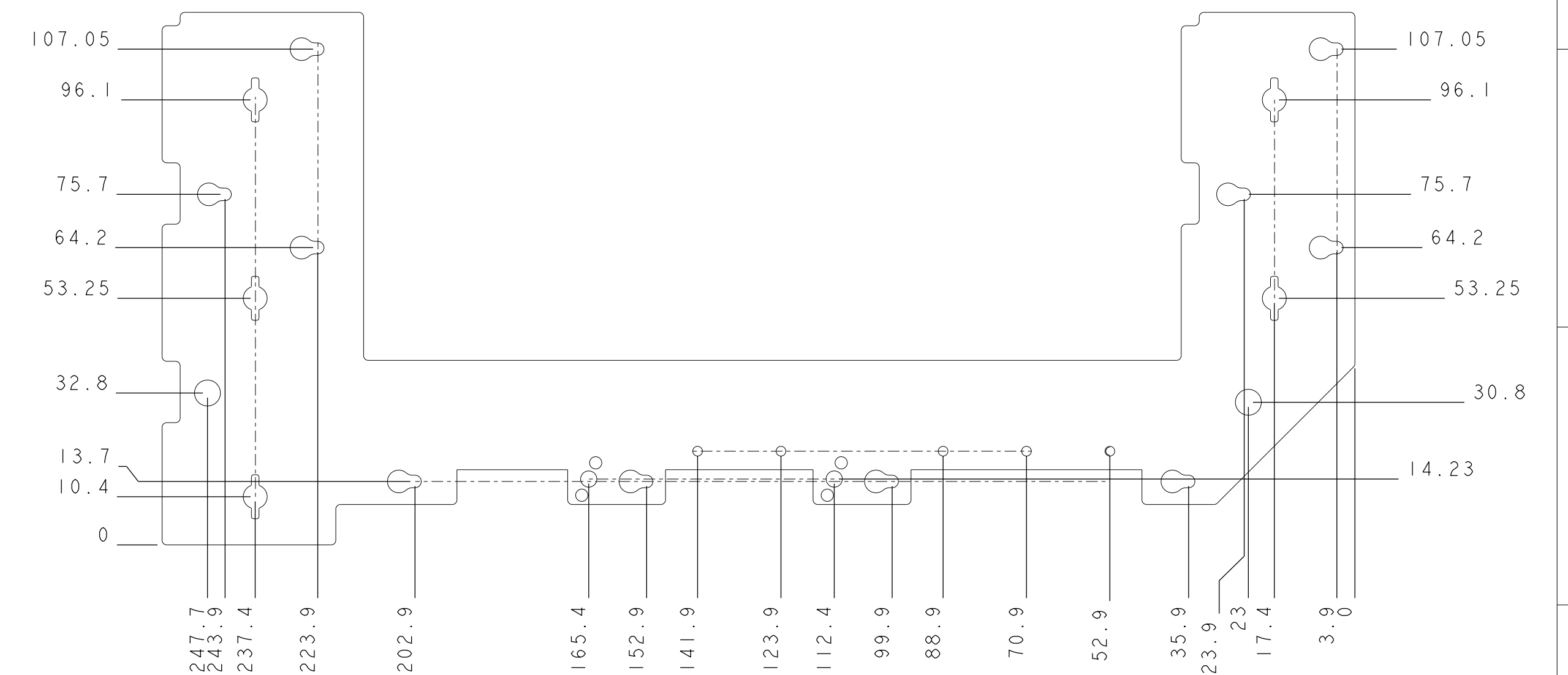
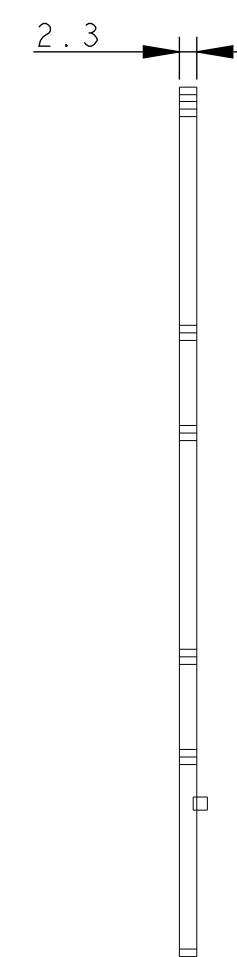
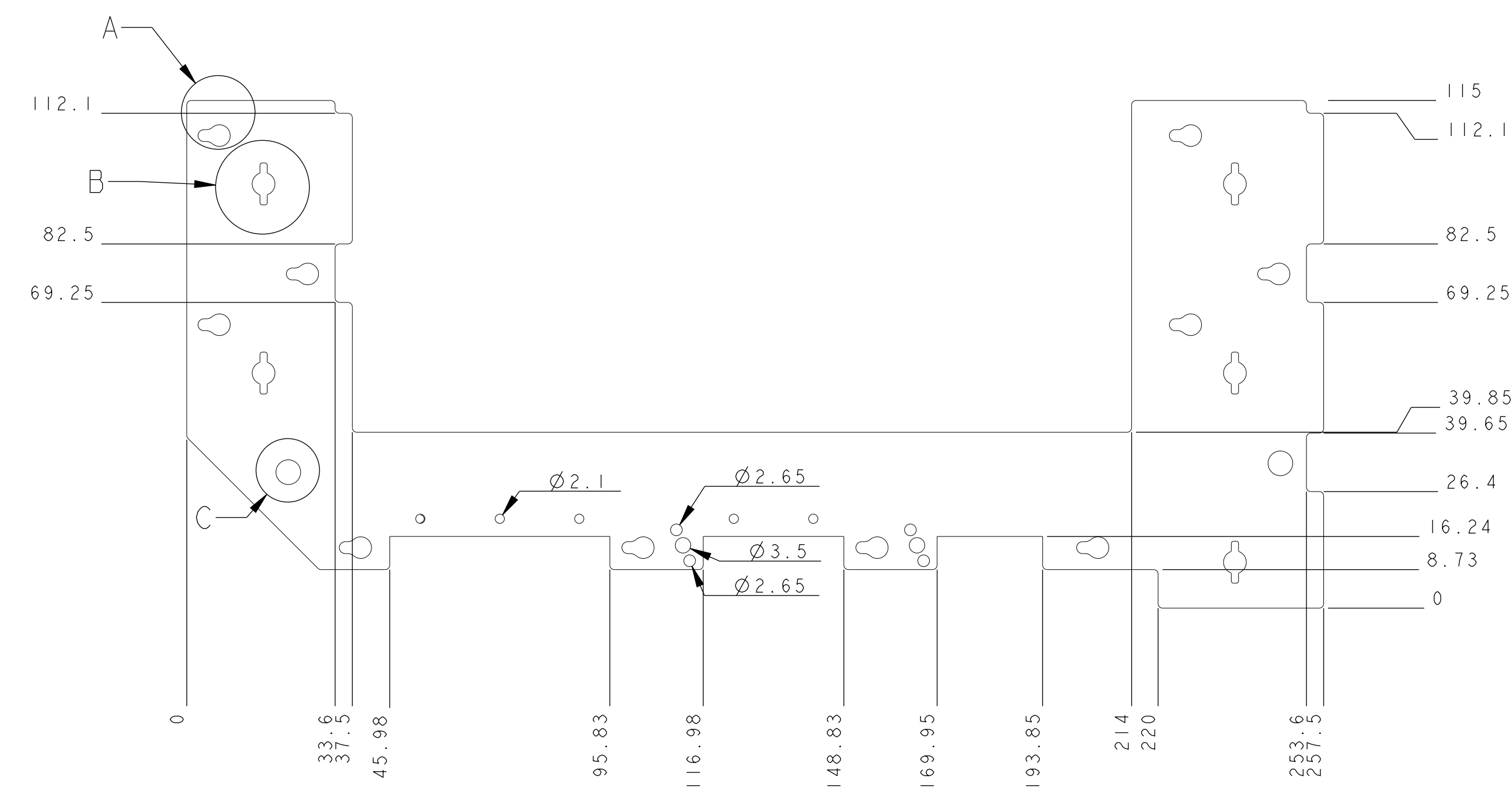
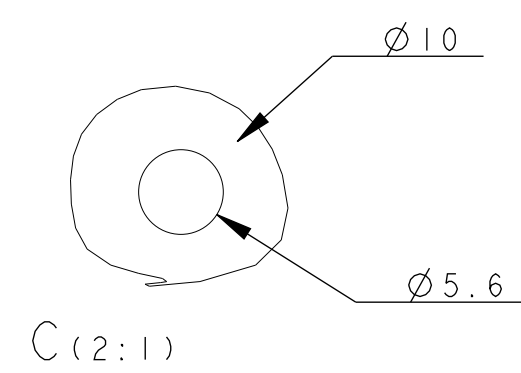
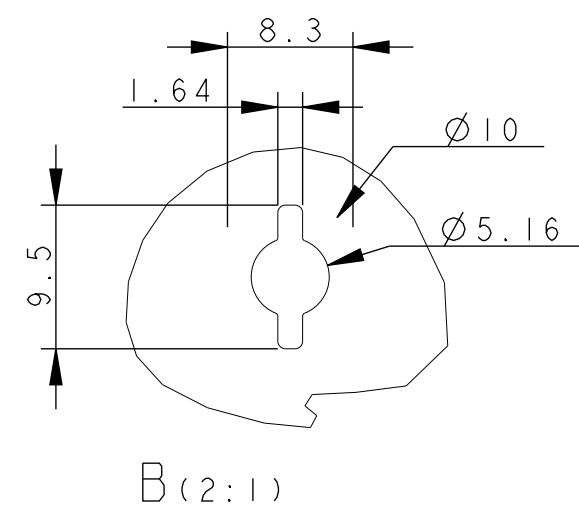
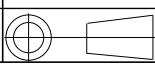


10	MS300501070	SCREW M3.0*5.0-1(N1) (NYLON)IRON	2	PART
9	MM30040BC15	SCREW M3.0*4-B(N1,NYLOK)IRON	5	PART
8	FBF06263010	THUMB SMT M3 F06G P293 B	2	ASSEMBLY
7	DFPJ14MR000	CONN DIP POWER JACK 14P MR(P2.0,H14.7)	5	PART
6	DFHS4FS008	CONN DIP HOUSING 54P 9R FS(P1.4,H10.7)	5	PART
5	DFHS36FS123	CONN DIP HOUSING 36P 4R FS(P2.0,H12.7)HV	6	PART
4	DFHS03FR014	CONN DIP HOUSING 3P 1R FR(H11.3)	2	PART
3	DFHDC0MR005	CONN PRESSFIT 120P 12R MR(P1.4,H15.75)	1	PART
2	DFHD01MS073	CONN DIP HEADER 1P 1R MS(H19)	5	PART
1	DAOS9NTH880	PCB S9N MIDDLE PLANE BD(BL.258.6*115.8)	1	PART
ITEM	PART NO.	DESCRIPTION	QTY	REMARKS

		2					
		1					
		ITEM		PART NO.		DESCRIPTION	
		Nokia				MODEL	
						Open edge	
RANGE		TOLERANCE		NAME		Open edge 3U BP BD	
0-10		±0.10		TOL. ±		APPROVED	





		2					
		1					
		ITEM		PART NO.		DESCRIPTION	
		Nokia				MODEL	Open edge
RANGE	TOLERANCE	NAME	Open edge 3U BP BD			APPROVED	
0-10	±0.10	TOL. ±	1 PLC	2 PLC	3 PLC	UNIT	mm
10-50	±0.15	MATERIAL				SCALE	1:1
50-100	±0.20	FINISH				DATE	Sep-20-18
100-	±0.25		The 3D Projection		DWG NO.		3/3
J		K		L		M	