

OPEN
Compute
Project®

What is the Open Compute Project?

Membership, Projects and Programs Overview

OCP FOUNDATION BOARD



Mark Roenigk
Chairman/President
Facebook



Partha Ranganathan
Google



Jason Waxman
Intel Corporation



Kushagra Vaid
Microsoft Corporation



Jim Hawkins
Rackspace



Andy Bechtolsheim
Individual



Rocky Bullock
OCP, Non-Voting

OCP FOUNDATION STAFF



Rocky Bullock
Chief Executive Officer



Bill Carter
Chief Technology Officer



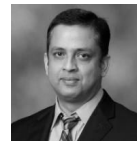
Steve Helvie
Vice President
Channel Development



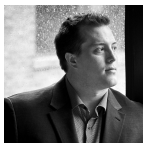
Dirk Van Slyke
Vice President
Marketing & Events



Archna Haylock
Director
Community



Rajeev Sharma
Director
Software & Technologies



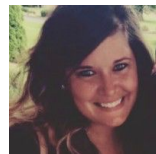
Michael Schill
Community & IT
Manager



John Laban
Representative
Europe



Kali Burdette
Manager
Meeting & Events



Kate Hendl
Meeting & Events
Specialist



Nick Bullock
Director
Finance

OCP MEMBERSHIP FACTS

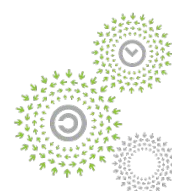
- ~200 Corporate Members
 - Adopters
 - Suppliers (HW and SW)
 - Solution Providers
- 6000 participants in our community
 - Technical (HW and SW)
 - Sales/Business Development
 - Executives
 - Manufacturing/Process
 - Facilities
 - Academia
- Member Companies from all over the world



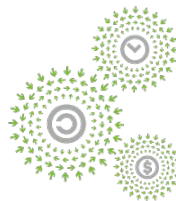
OPEN
COMMUNITY®



OPEN
SILVER®



OPEN
GOLD®



OPEN
PLATINUM®



OPEN
Compute Project

SOLUTION PROVIDER®



OPEN
Compute Project

COLO SOLUTION PROVIDER™

[OCP Membership Directory](#)

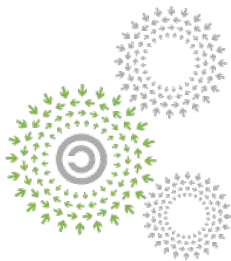
OCP MEMBERSHIP & ANNUAL DUES



OPEN
COMMUNITY®

\$2500

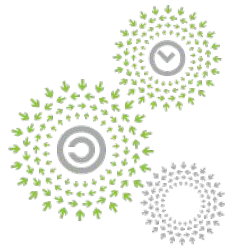
0 contributions
0 events



OPEN
SILVER®

\$60,000

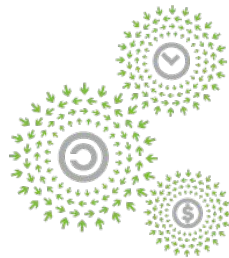
0 contributions
1 event



OPEN
GOLD®

\$50,000

1 contribution★
2 events



OPEN
PLATINUM®

\$40,000

2 contributions★
3 events

OCP MEMBERSHIP OVERVIEW

★Contribution opt-outs available for Gold & Platinum levels... reach out to OCP staff for more details.

OCP MEMBERSHIP BENEFITS - COMMUNITY

Annual Contribution Requirement: None
Annual Sponsorship Requirement: None
Eligible for becoming a SP/Reseller: Yes
Summit Sponsorship Discount: None
Annual Speaking Engagements: None
PL or IC position eligibility: Yes – pending contribution
Voting keys for IC election: None
Eligible for OCP Accepted™ Product Recognition: Yes
Eligible for OCP Inspired™ Product Recognition: No
Eligible for OCP Ready™ Facility Program: Yes

Annual Cost: **\$2,500**

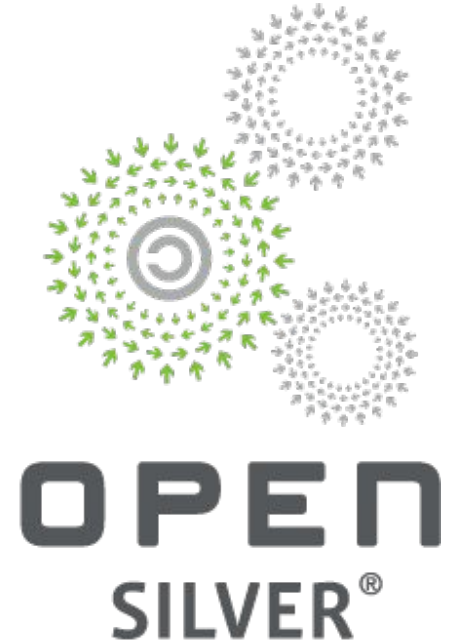


OPEN
COMMUNITY®

OCP MEMBERSHIP BENEFITS - SILVER

Annual Contribution Requirement:	None
Annual Sponsorship Requirement:	1
Eligible for becoming a SP/Reseller:	Yes
Summit Sponsorship Discount:	10%
Annual Speaking Engagements:	1
PL or IC position eligibility:	Yes
Voting keys for IC election:	1
Eligible for OCP Accepted™ Product Recognition:	Yes
Eligible for OCP Inspired™ Product Recognition:	Yes
Eligible for OCP Ready™ Facility Program:	Yes

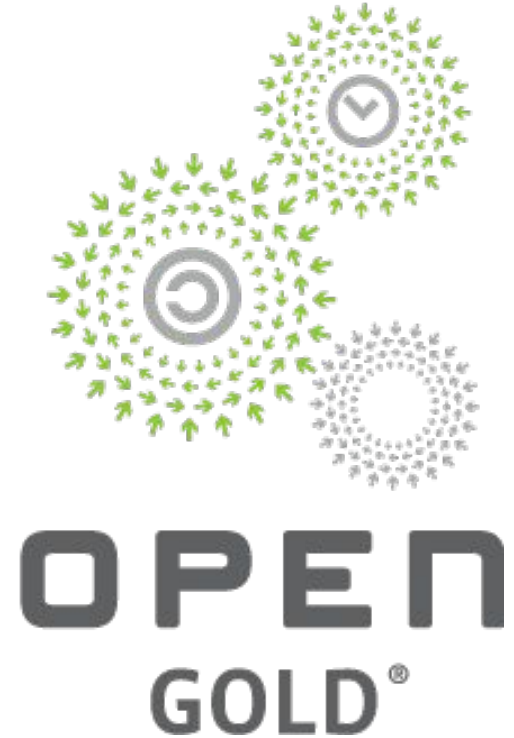
Annual Cost: **\$60,000**



OCP MEMBERSHIP BENEFITS - GOLD

Annual Contribution Requirement:	1	
Annual Sponsorship Requirement:	2	
Eligible for becoming a SP/Reseller:	Yes	
Summit Sponsorship Discount:	15%	
Annual Speaking Engagements:	2	
PL or IC position eligibility:	Yes	
Voting keys for IC election:	2	
Eligible for OCP Accepted™ Product Recognition:	Yes	Yes
Eligible for OCP Inspired™ Product Recognition:	Yes	Yes
Eligible for OCP Ready™ Facility Program:	Yes	

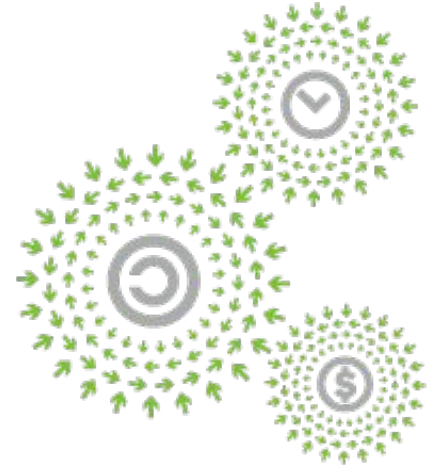
Annual Cost: **\$50,000**



OCP MEMBERSHIP BENEFITS - Platinum

Annual Contribution Requirement:	2	
Annual Sponsorship Requirement:	3	
Eligible for becoming a SP/Reseller:	Yes	
Summit Sponsorship Discount:	20%	
Annual Speaking engagements:	3	
PL or IC position eligibility:	Yes	
Voting keys for IC election:	3	
Eligible for OCP Accepted™ Product Recognition:	Yes	
Eligible for OCP Inspired™ Product Recognition:	Yes	
Eligible for OCP Ready™ Facility Program:	Yes	

Annual Cost: **\$40,000**



OPEN
PLATINUM®

OCP COMMUNITY: PROJECTS & SUB-PROJECTS



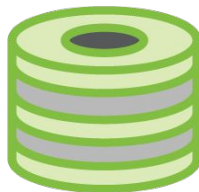
NETWORKING

OPEN NTKW LINUX (ONL), OPEN
NTWK INSTALL ENV (ONIE), SWITCH
ABST INTERFACE (SAI), SONiC



RACK & POWER

ADV COOLING SOLUTIONS(ACS),
POWER SHELF INPUT, OPEN RACK
FRAME V3, BM LC CONNECTOR,
ORV3 POWER SYSTEMS



STORAGE

ARCHIVAL



SERVER

PCI 3.0 MEZZ, OPEN ACCELERATOR (OAI),
OPEN DOMAIN SPECIFIC ARCHITECTURE
(ODSA), HIGH PERF COMPUTING (HPC)



DC Facility

MODULAR DC, ADV
COOLING FACILITIES,
CRITICAL FAC OPS



TELCO

EDGE



HW MGMT

OPENRMC, HW
MODULE MGMT,
HW FAULT MGMT



Open Sys FW

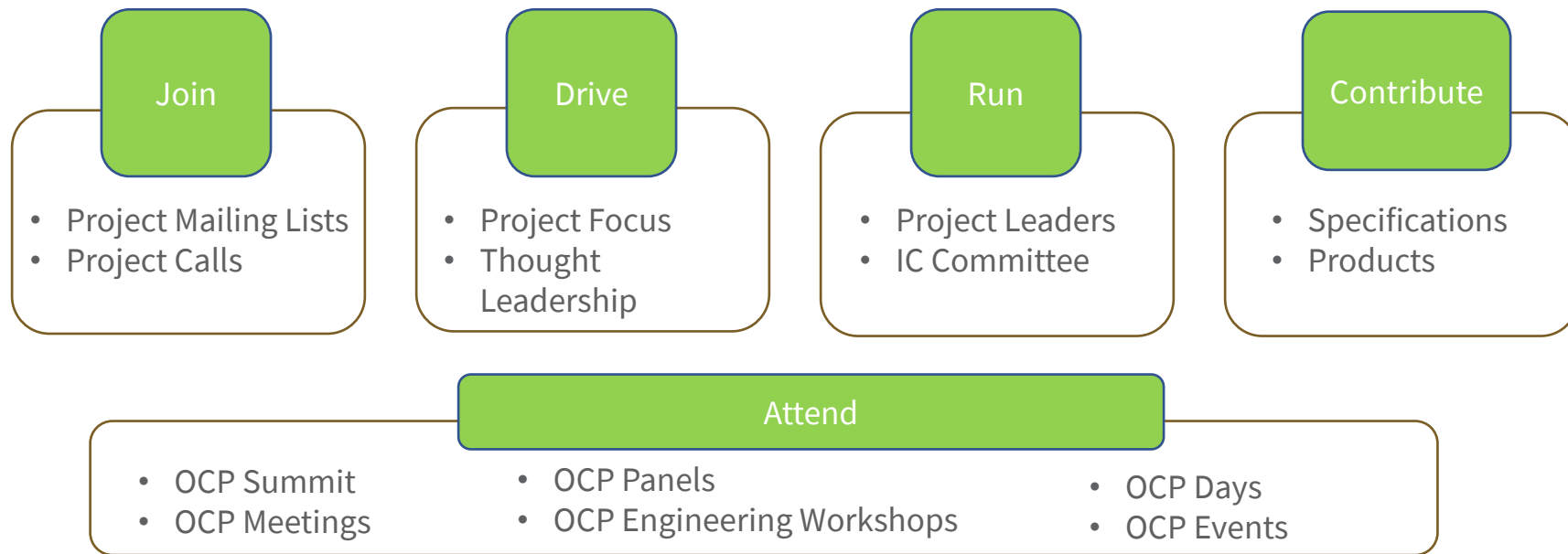


SECURITY



TIME APPLIANCES

How to Get Started?



Ways to Contribute to OCP

TRADITIONAL



Specs



Design
Files



Product /
Facility
Recognition

OUT OF THE BOX



Reference
Architecture



Tested
Configs



White
Papers



Embedded
SW



Case
Studies



Seminars



Requirements
Documents



Videos

OCP PRODUCT RECOGNITION PROGRAM



Submit your products for recognition if:

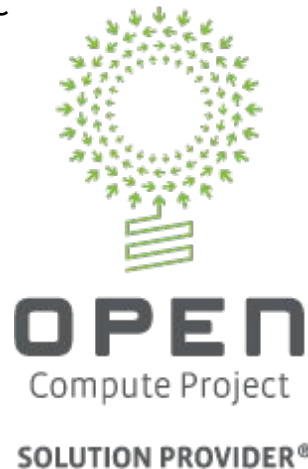
- You are building a product based on an OCP approved spec
- You are submitting your spec as a contribution and submitting your product for recognition.



Once your product receive the cert mark you can:

- Use the cert mark on your product collateral
- Use the cert mark on your website
- Use the cert mark as a differentiator on RFPs/RFQs
- Become an OCP Solution Provider to use the OCP Marketplace as an additional channel

Annual Cost for OCP Solution Provider Program: **\$4,000 USD**



OCP PRODUCT RECOGNITION PROGRAM

PRODUCTS VALIDATED BY OCP CARRY THE OCP MARK



Products that comply 100% with an existing approved specification and the design files are open sourced and available. All levels are eligible.

For Adopters

Are they truly open?

Look for the OCP Cert Marks

Include them in your RFP



Products that comply 100% with an existing approved specification and are available. OCP Silver, Gold or Platinum Members are eligible.

For Suppliers

Apply for the Cert Mark @ OCP

It is FREE

Get the Logo and advertise!

OCP FACILITY RECOGNITION PROGRAM

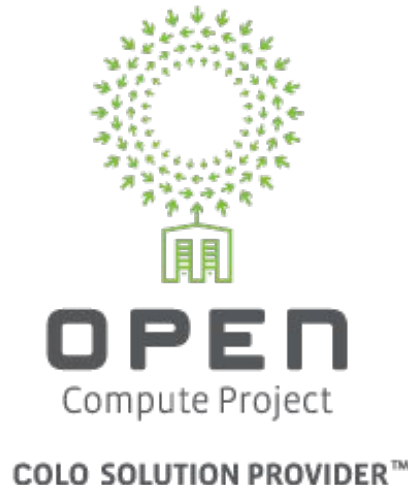


OCP Guidelines for Colos - Checklist

File Edit View Insert Format Data Tools Add-ons Help Last edit was made on May 16 by Brevan Reyher

	A	B	C	D	E
1	Data Center Subsystems	Attribute	Acceptable		Optimum
27	Data Center Access	nice-to-have			
28	Data Center Access	Pallet ramp			Available
29	Data Center Access	Goods In Area	Sufficiently sized to accommodate 24 crated cabinets (add size in sq. m/ sq. ft.)		Sufficiently sized to accommodate 50 crated cabinets (add size in sq. m/ sq. ft.)
30	Data Center Access	Secure storage area	Sufficiently sized to accommodate 24 crated or uncrated racks		Sufficiently sized to accommodate 50 crated or uncrated racks
31	Electrical Systems	must-have			
32	Electrical Systems	In Rack Power shelf	2+1 redundancy		5+1 redundancy
33	Electrical Systems	Number of independent circuits to the rack	1N (A)		2N (A+B)
34	Electrical Systems	Circuit Capacity	3φ 16A		3φ 32A
35	Electrical Systems	Power receptacle / WIP type	IEC60309-2 5 wire or IEC-309 16A		IEC60309-2 5 wire or IEC-309 32A
36	Electrical Systems	Voltage (single phase)	180 – 264 VAC		180 – 264 VAC
37	Electrical Systems	Frequency	47-63 Hz		47 - 63 Hz
38	Electrical Systems	Central, upstream UPS	Yes - if no BBU		No- with BBU
39	Electrical Systems	considerations			
40	Electrical Systems	In Rack Battery Backup Unit (BBU)	Li-ion		Li-ion or LiFePO4
41	Electrical Systems	BBU Autonomy time	90 Seconds		>3 minutes
42	Electrical Systems	Central, upstream UPS	None		None
43	Electrical Systems	Generator Start-up time (if using rack BBU)	< 1 minute		< 1 minute
45	Cooling System	must-have			
46	Cooling System	Rack airflow direction	Front to Back		Front to Back
47	Cooling System	Air containment methods	Containment hot/cold applicable		Hot aisle containment

+ Revision, Licence & Use Checklist - Simple Checklist - Detailed Recognition Scorecard



Facilities that are compliant with the OCP's Colo Guidelines will receive an OCP Ready™ Mark. This means that they are ready for OCP Solutions.

Annual Cost for OCP Colo SP Program: **\$4,000 USD**



OCP MARKETPLACE

Cumulus Express 32-port 100GbE Switch - FRONT TO BACK

Cumulus Express offers turnkey solution featuring an open networking switch, which is preloaded with the Cumulus Linux operating system, inst...

Solution Providers: Cumulus Networks, Circle B

Part #: CX-8032-S-F-B

[Specifications](#)



QCT 19" Full-Featured Energy Efficient 2-Socket 1U Server - 1G - 2.5" HDD - SASEXP

Designed for demanding storage and computing workload this server is ideal for a Mail-server, Database, E-commerce and High-performance Co...

Solution Provider: Quanta Cloud Technology

Part #: D51B-1U -1S2BZZ000H

[Specifications](#)



Kao Data London DC1 (KLONDC1)

Designed for optimal data center co-location requirements, focused on reducing Total Cost of Ownership through efficiency and adhering to OCP ...

Solution Provider: Kao Data

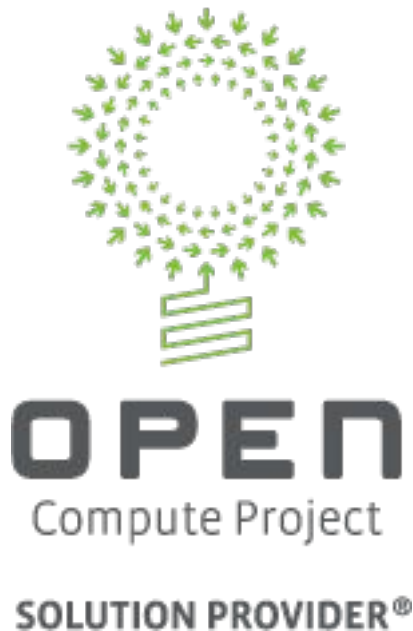
Part #: KLON DC1 - TS01 to TS04

[Specifications](#)



The [OCP Marketplace](#) is a listing of the OCP Products and Facilities available through OCP Solution Providers. If you are interesting in listing your products or facilities on the Marketplace, sign up to be an [OCP Solution Provider](#).

ADOPTING OCP GEAR



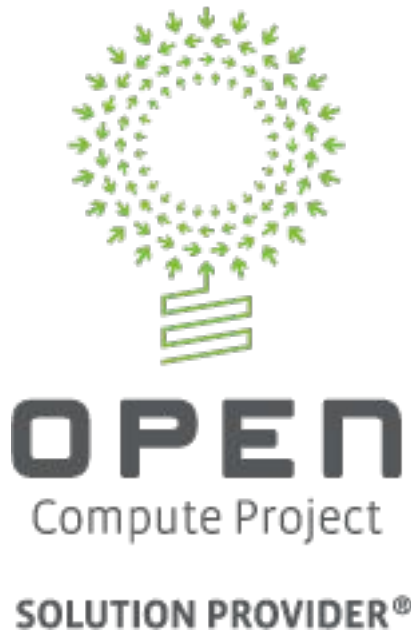
Go to the OCP Solution Provider Directory and find your local OCP SPs.

<https://www.opencompute.org/sp/open-compute-project-solution-providers>

Go to the OCP Marketplace to find OCP Solutions

<https://www.opencompute.org/products>

USING AN OCP FACILITY



Go to the OCP Colo Solution Provider Directory and find your local OCP Colos.

<https://www.opencompute.org/sp/open-compute-project-solution-providers>

Go to the OCP Marketplace to find the exact location of those OCP Ready™ Facilities.

<https://www.opencompute.org/products>

FOR MORE INFORMATION

Membership: membership@opencompute.org

Community Related Questions:

Archna Haylock

Archna@opencompute.org

WhatsApp: Archna Haylock || WeChat: archnahaylock || Twitter: @ArchnaOCP

LinkedIn: [linkedin.com/in/archnahaylock](https://www.linkedin.com/in/archnahaylock)