



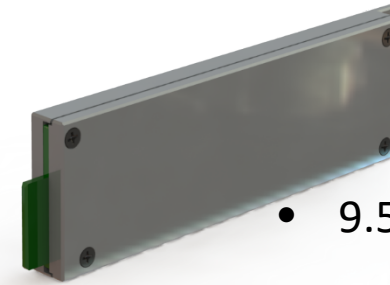
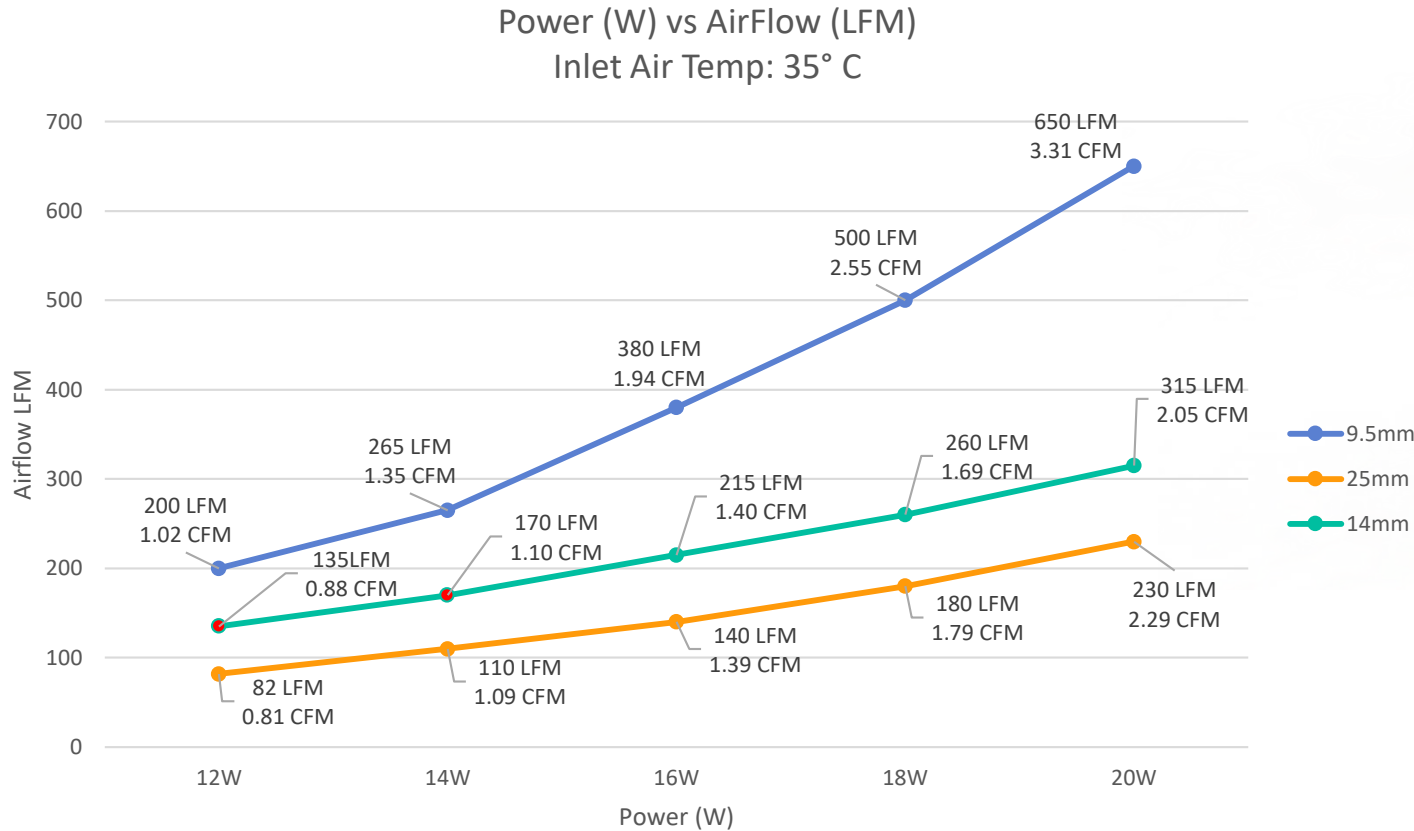
Western Digital®

E1.S 14mm Airflow vs. Power

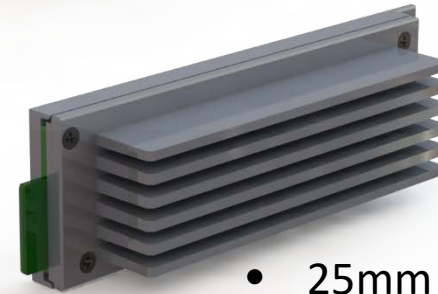
David Wright – Enterprise SSD Thermal Design

David Landsman – Industry Standards

E1.S WD Airflow vs. Power for 14mm thickness



- 9.5mm enclosure (20W)



- 25mm enclosure (25W)

E1.S (SFF-TA-1006) Rev 1.3

- 111.5mm x 31.5mm
- Supports $\geq 12W$
- X4 interface
- Thermal guidelines @35C allows:
 - 9.5mm 2.02CFM for 20W
 - 25mm 4.1CFM for 25W

E1.S 14mm (potential) can achieve 20W while meeting E1.S inlet air temp and CFM spec

- These are simulated results
- SSD case temps exceeds 80° C in these scenarios
- Data is preliminary and subject to change without notice