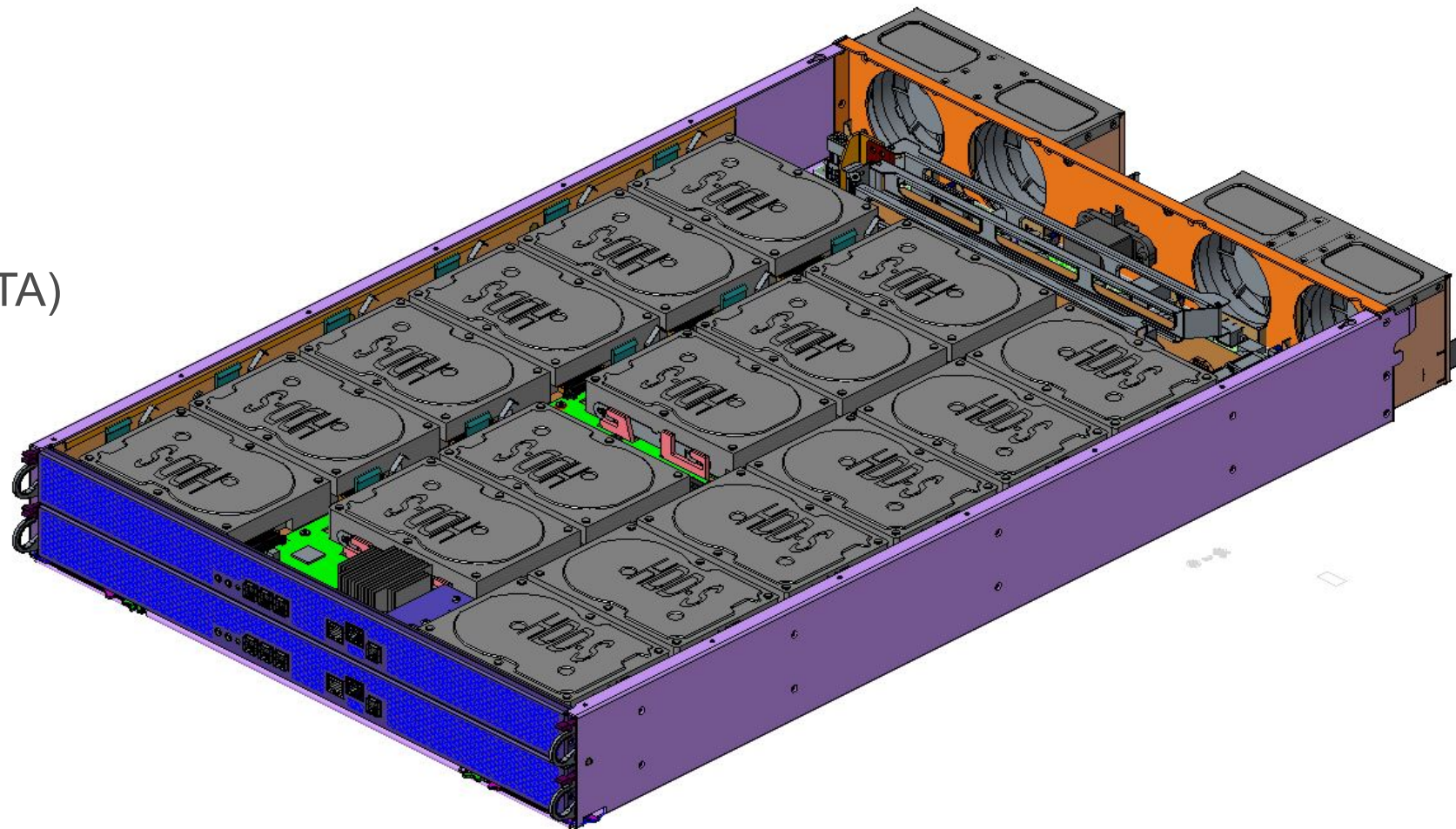


inspur

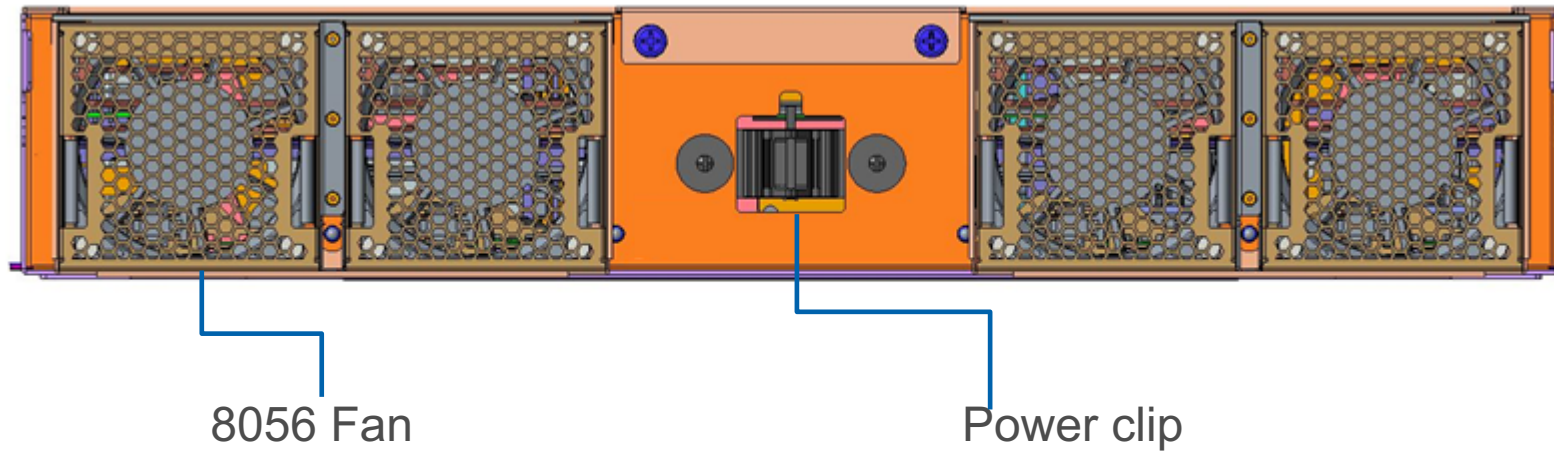
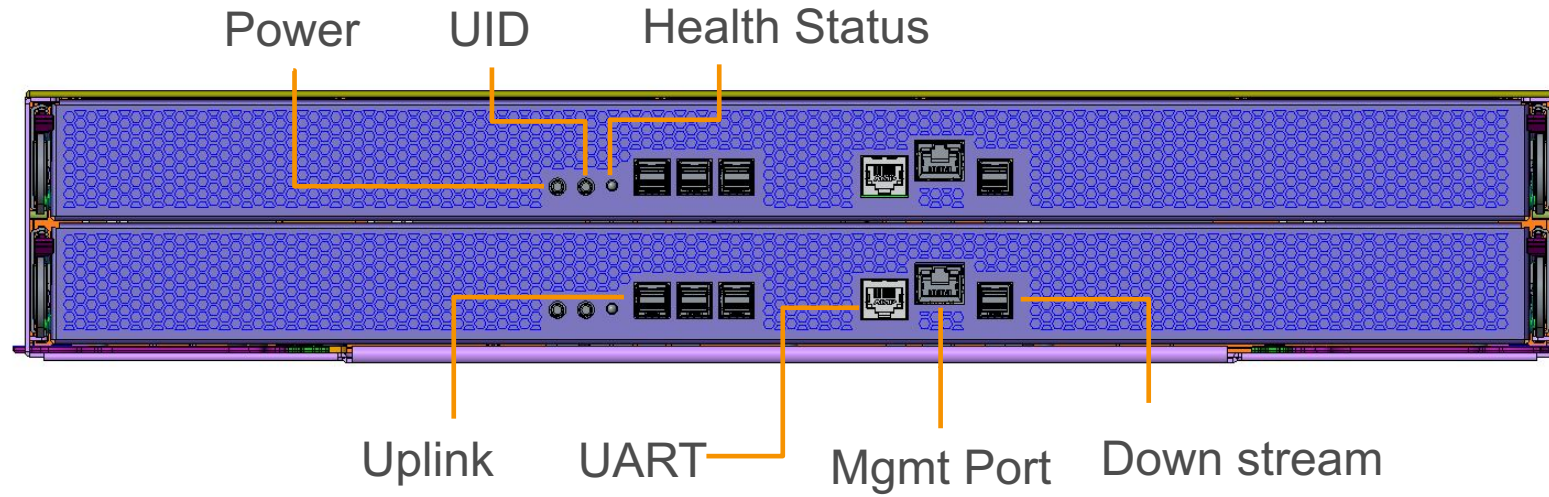
**A Storage JBOD
Goose Lake Overview**

Goose Lake Product Overview

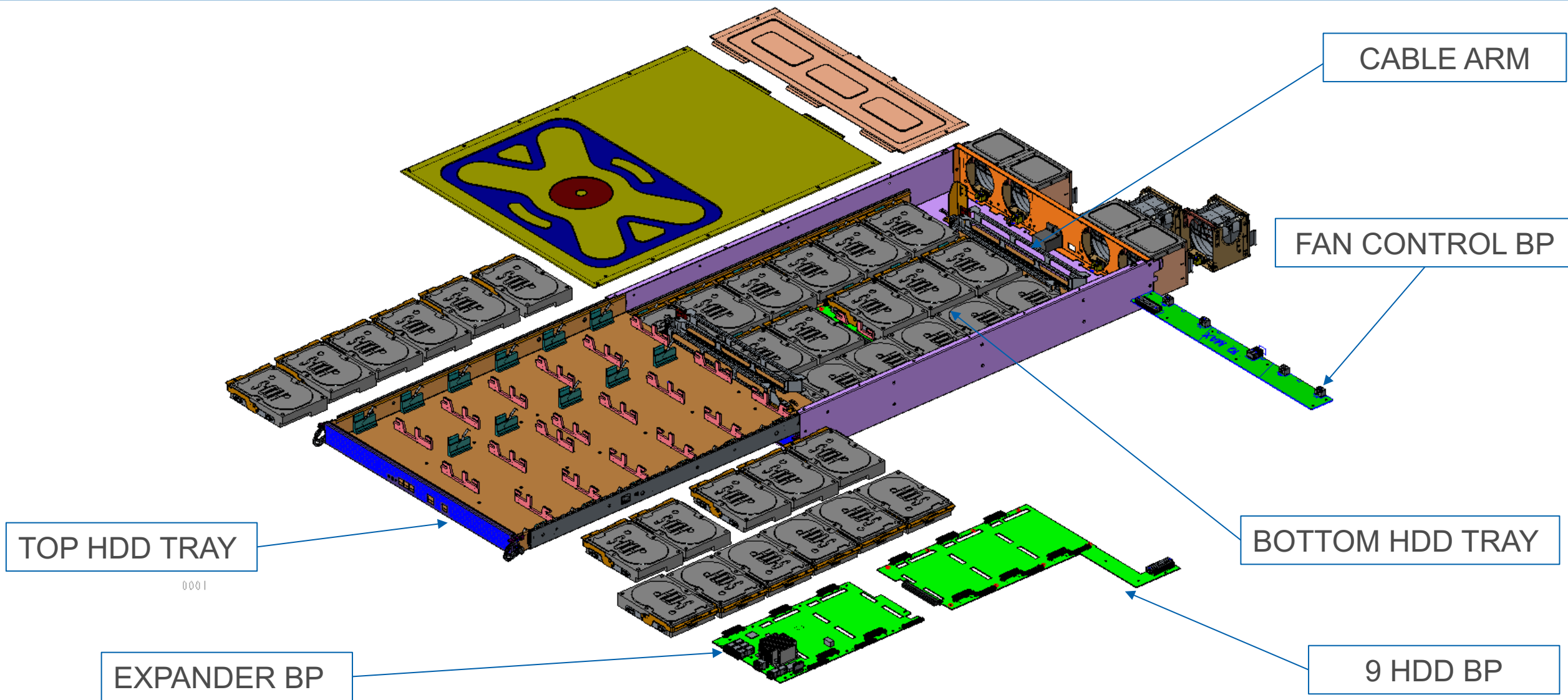
- 20U 34 HDDs(SAS/SATA)
- 2 HDD trays
- 4 Dual Rotor Fans



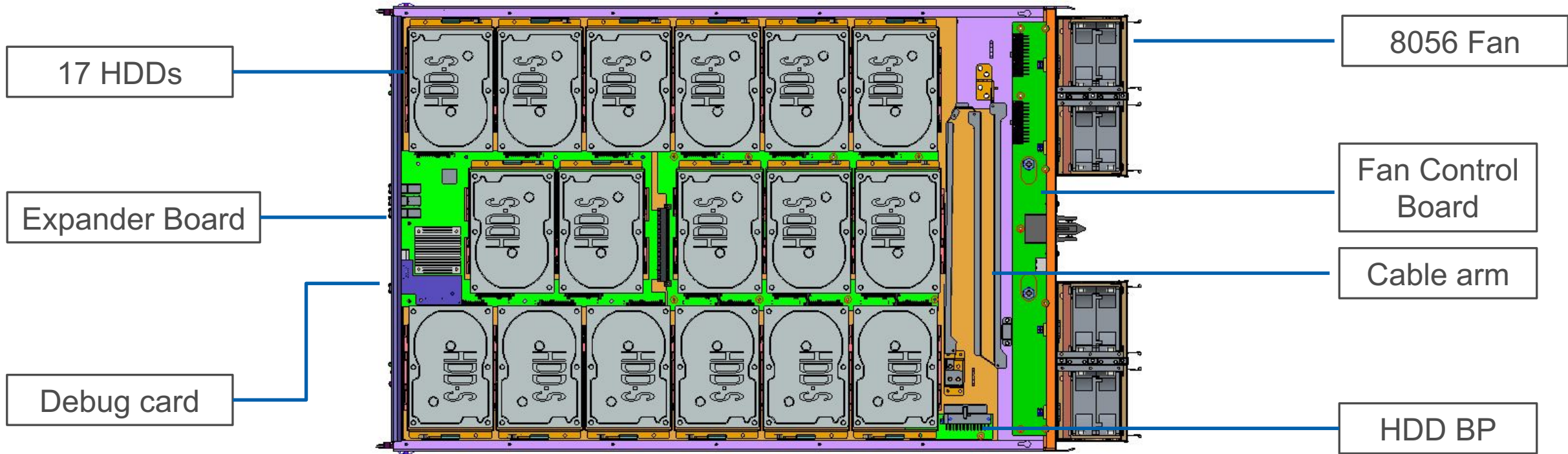
Front view and Rear view



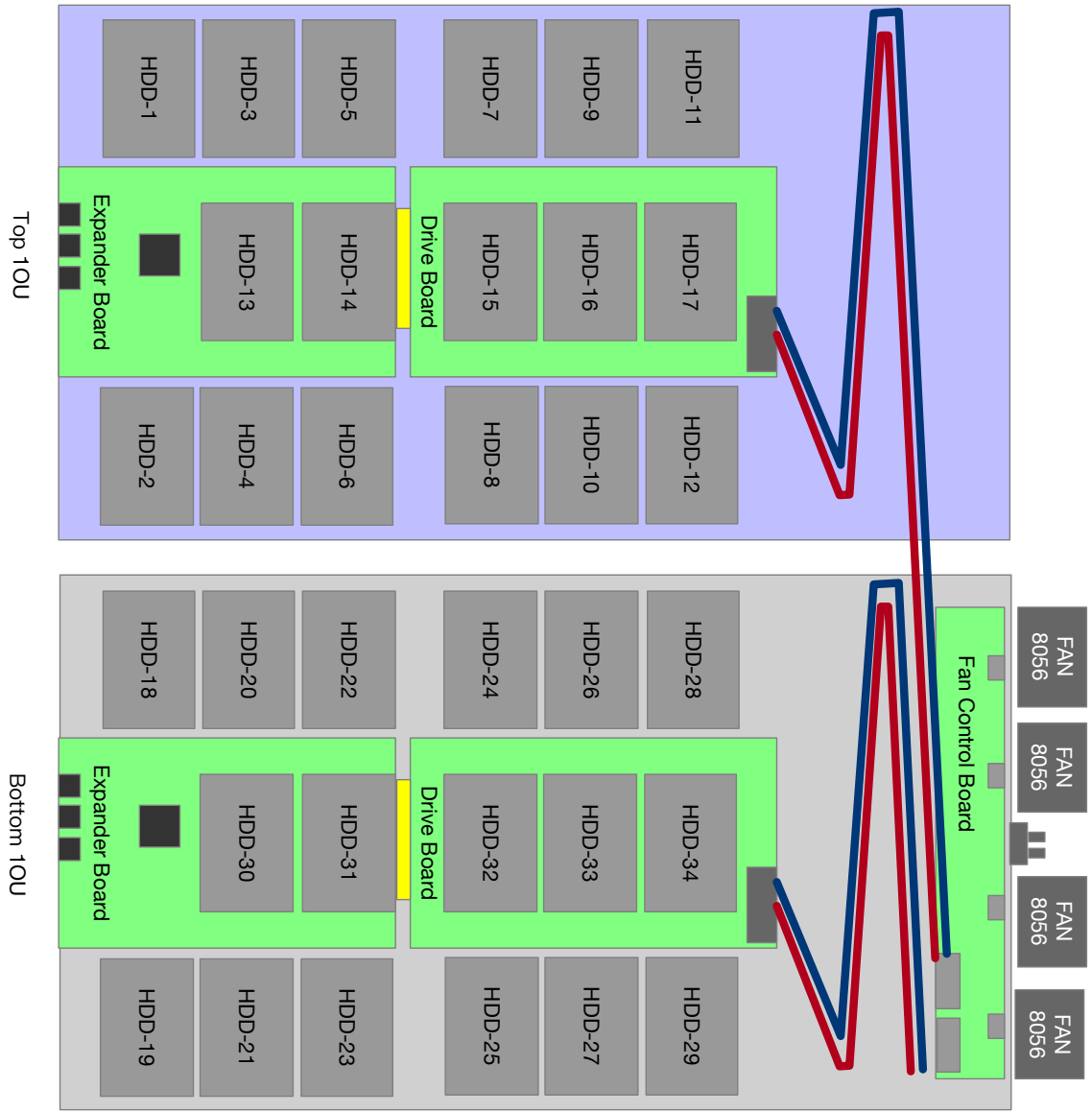
Explosion View



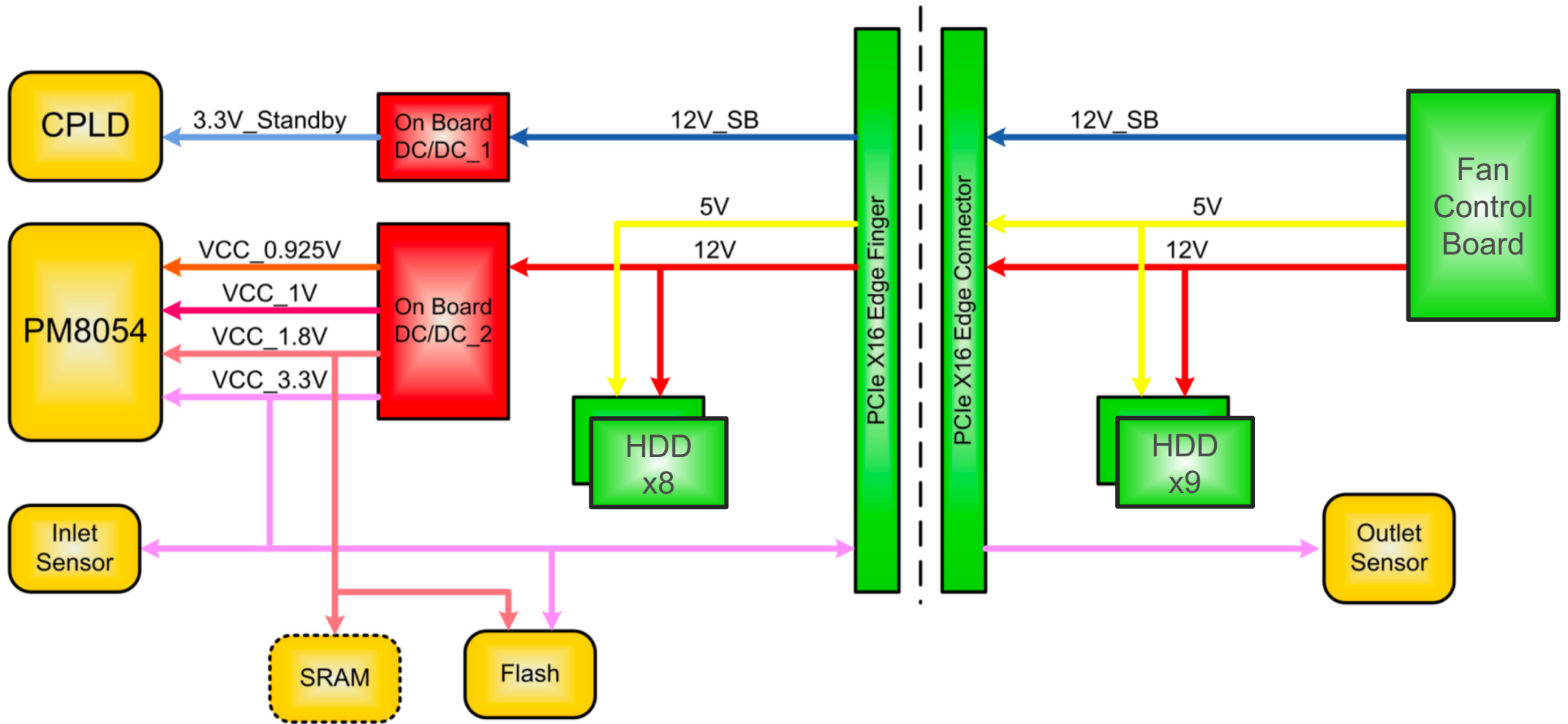
Top View



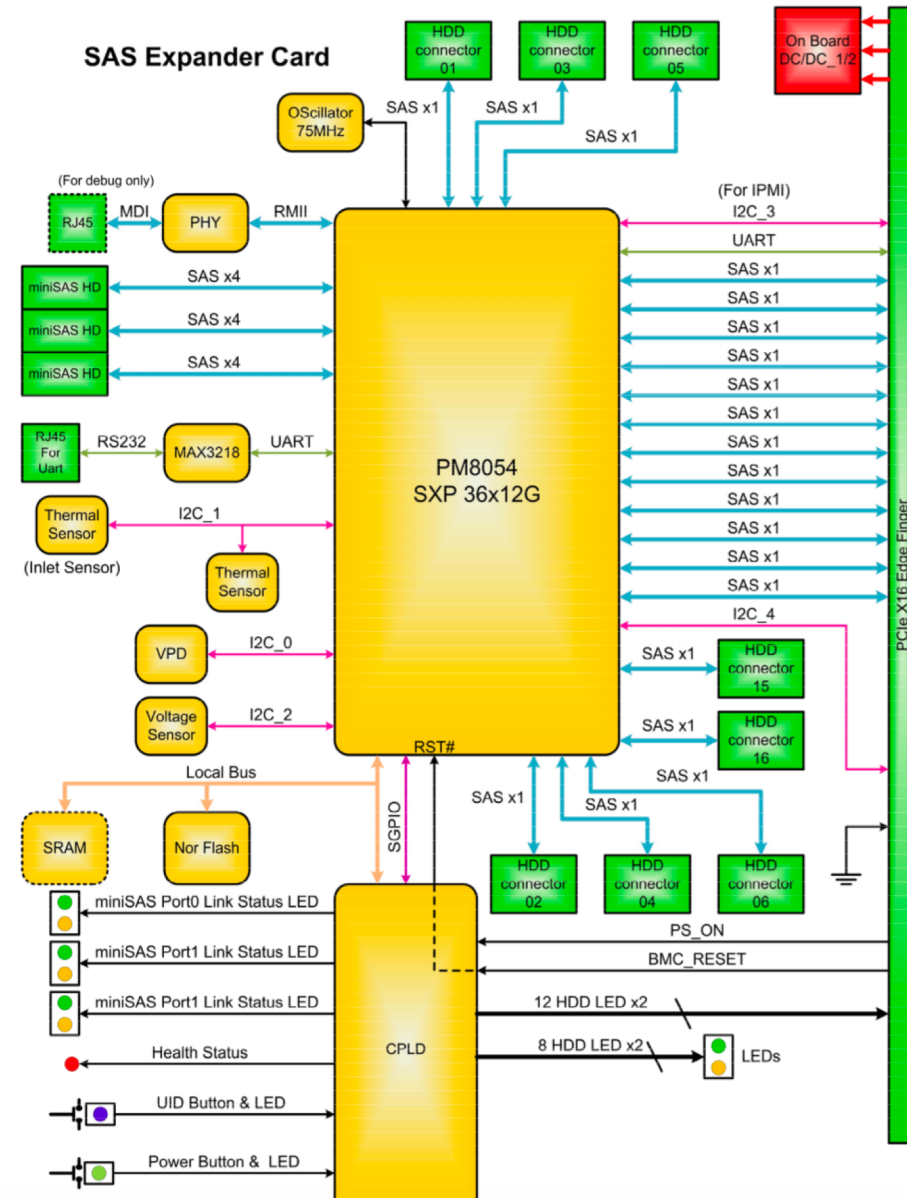
System Topology



Power Topology

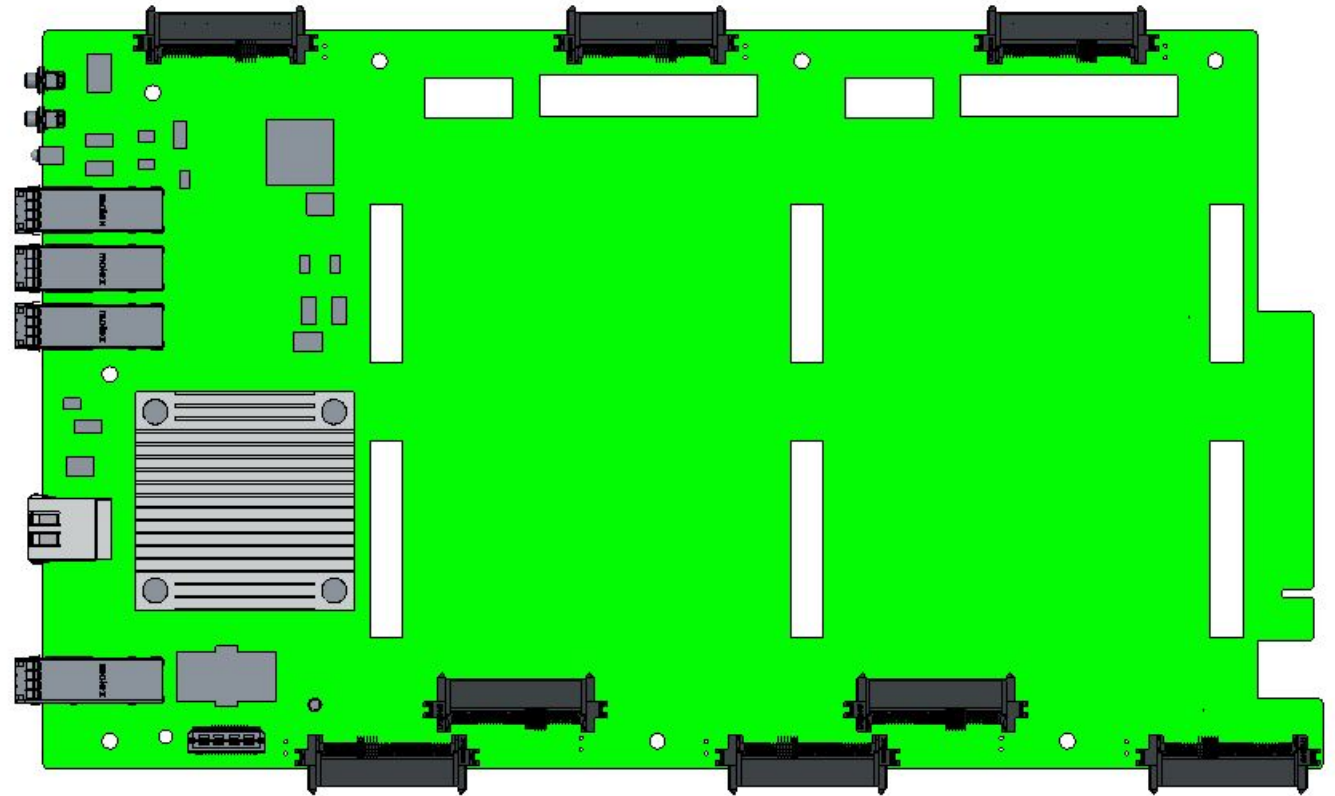


Expander Board Diagram



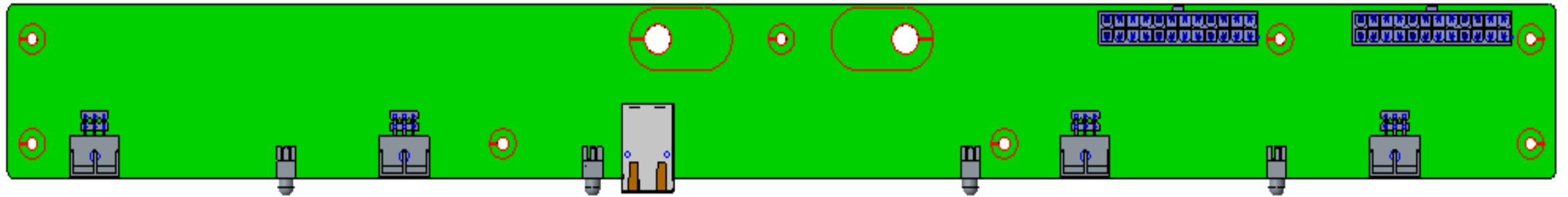
Expander Board

- PM8054 expander
- 8 HDD connectors
- 4 Mini SAS HD connector
- Power Button/LED
- UID Button/LED
- Health Status LED
- UART



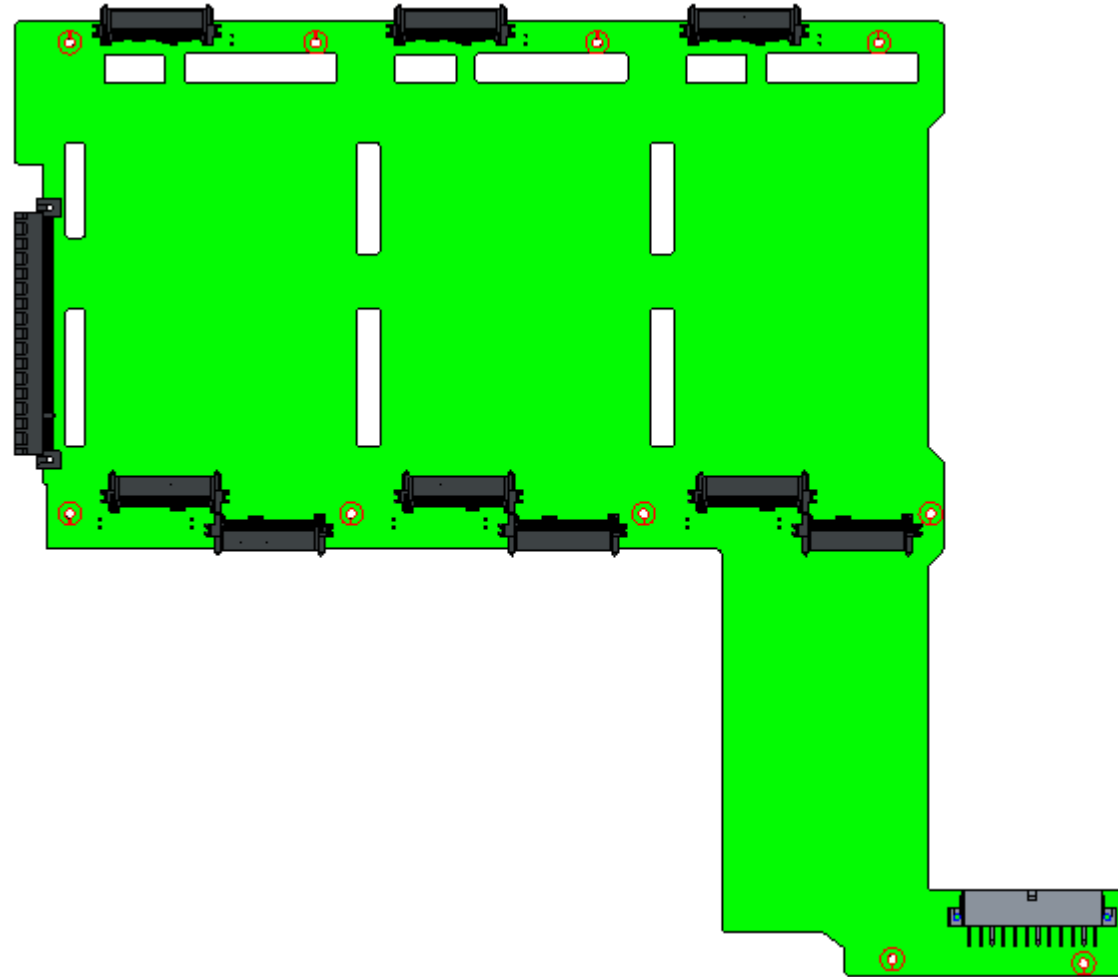
FAN Control Board

- Power for HDD trays
- Fan control
- Power and fan management
- Fan fail LED



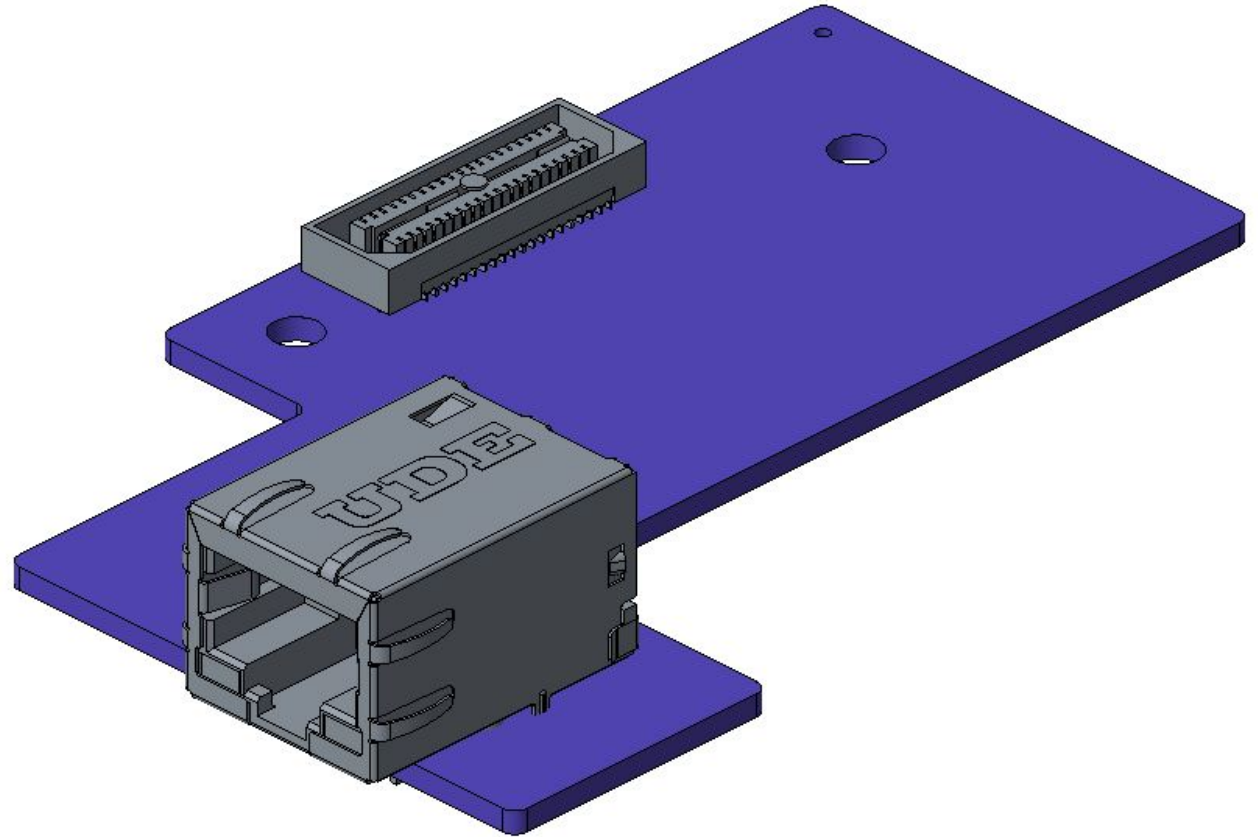
9 HDD BP

- 9 HDD connectors
- Power transmission
- Temperature sensors



Expander Management Card

- Standard SES-3 Management Interface
- CLI console Management Interface
- IPMB
- Power monitor
- Expander status
- HDD health status
- FRU
- Temperature monitor
- LED control
- Post test
- Chassis event log
- Expander Firmware update





Inspur Systems Inc.
www.inspursystems.com

Thank You